



## Review article

## CD20 therapies in multiple sclerosis and experimental autoimmune encephalomyelitis – Targeting T or B cells?

Marie Colombe Agahozo<sup>a</sup>, Laura Peferoen<sup>a</sup>, David Baker<sup>b</sup>, Sandra Amor<sup>a,b,\*</sup><sup>a</sup> Pathology Department, VU Medical Centre, VU University of Amsterdam, The Netherlands<sup>b</sup> Neuroimmunology Unit, Blizard Institute, Barts and the London School of Medicine & Dentistry Queen Mary University of London, United Kingdom

## ARTICLE INFO

## Article history:

Received 1 May 2016

Received in revised form

6 July 2016

Accepted 19 July 2016

## Keywords:

Multiple sclerosis

Animal models

Experimental autoimmune encephalomyelitis

Therapeutics

B cells

CD20

Epstein-Barr virus

## ABSTRACT

MS is widely considered to be a T cell-mediated disease although T cell immunotherapy has consistently failed, demonstrating distinct differences with experimental autoimmune encephalomyelitis (EAE), an animal model of MS in which T cell therapies are effective. Accumulating evidence has highlighted that B cells also play key role in MS pathogenesis. The high frequency of oligoclonal antibodies in the CSF, the localization of immunoglobulin in brain lesions and pathogenicity of antibodies originally pointed to the pathogenic role of B cells as autoantibody producing plasma cells. However, emerging evidence reveal that B cells also act as antigen presenting cells, T cell activators and cytokine producers suggesting that the strong efficacy of anti-CD20 antibody therapy observed in people with MS may reduce disease progression by several different mechanisms. Here we review the evidence and mechanisms by which B cells contribute to disease in MS compared to findings in the EAE model.

© 2016 Elsevier B.V. All rights reserved.

## Contents

1. Introduction . . . . .	110
2. B cells and autoantibodies in EAE . . . . .	111
3. B cell as immune modulators . . . . .	111
4. B cells and autoantibodies in MS . . . . .	112
5. B cell therapies . . . . .	113
5.1. CD20 targeted therapy . . . . .	113
5.2. CD20 <sup>+</sup> T cells . . . . .	114
5.3. Risks of infection . . . . .	114
6. Novel B cell targeting therapies . . . . .	115
7. Future perspectives and concluding remarks . . . . .	115
Conflict of interests . . . . .	115
References . . . . .	115

## 1. Introduction

Multiple sclerosis (MS) is a chronic immune-mediated neurodegenerative disease of the central nervous system (CNS) characterized by inflammation, demyelination and axonal loss. The most widely-used experimental animal model to study mechanisms of CNS damage, as well as for drug development for MS is experimental autoimmune encephalomyelitis (EAE) (Baxter, 2007;

*Abbreviations:* CNS, central nervous system; EAE, experimental autoimmune encephalomyelitis; MS, multiple sclerosis; PwMS, Person with MS; EBV, Epstein-Barr virus

\* Corresponding author at: Pathology Department, VU Medical Centre, VU University of Amsterdam, The Netherlands.

E-mail address: [s.amor@vumc.nl](mailto:s.amor@vumc.nl) (S. Amor).

<http://dx.doi.org/10.1016/j.msard.2016.07.011>

2211-0348/© 2016 Elsevier B.V. All rights reserved.

Gold et al., 2006; Kipp et al., 2012). EAE is a spectrum of experimentally induced immune-mediated neurological diseases of the CNS (Kipp et al., 2012), induced in many species. It is well known that the mode of induction, animal species and strains of rodents heavily influence the course of disease and observed immunological alterations and pathology in the CNS (Kipp et al., 2012; Baker and Amor, 2014). Most of the current drugs available for MS are broad-spectrum immunomodulatory agents, although more recently specific therapies using cell-depleting antibodies such as those targeting B cells have been shown to be effective (Kappos et al., 2011; Brück et al., 2013). Despite the apparent efficacy of B cell depletion there is much to be learned about how B cells contribute to the regulation and pathogenesis of MS, given the balance between regulatory and effector cell functions as shown both in EAE and MS. In addition, broad B cell-targeted depletion carries risks, notably associated infections. This indicates that despite being very effective, the depletion regimen could be better targeted to remove pathogenic B cells while leaving the protective and regulatory arm intact.

## 2. B cells and autoantibodies in EAE

Until the last decade MS has been widely considered a white matter disorder, and thus EAE has been commonly induced following immunization with myelin antigen such as myelin basic protein (MBP). However, clinical and pathological features of MS are usually better represented when EAE is induced using total CNS tissues (Sospedra et al., 2005) suggesting that autoimmunity to other myelin components may be essential to model chronic relapsing neurological disease, demyelination and axonal damage and secondary progressive disease. Currently, the most widely used autoantigen for induction of EAE is the minor protein myelin oligodendrocyte glycoprotein (MOG), present on the outer membrane of oligodendrocytes (Schluesener et al., 1987; Linington et al., 1988; Amor et al., 1994). Similar to EAE induced with other autoantigens, the clinical course and pathology of MOG-induced EAE is heavily dependent on the nature of the MOG antigen for example the presence of post translational modifications, as well as the mouse strain used for immunization (Smith et al., 2005; de Graaf et al., 2012) (Table 1).

Importantly, the majority of studies, including those focusing on the role of B cells, make use of the C57BL/6 mice since most transgenic or mutant mice are bred on this background. Notably,

the majority of EAE studies in this mouse strain uses mouse MOG<sup>35–55</sup> peptide which induces a monophasic in which B cells and antibodies to MOG do not play a role (Oliver et al., 2003).

The role of pathogenic autoantibodies was first indicated following the demonstration that circulating autoantibodies to myelin in EAE induce myelin damage in vitro and in vivo (Apple and Borstein, 1964). This is supported by studies showing that titers of antibodies to myelin are high during chronic stages of EAE when demyelination was most pronounced, and that some MOG antibodies, notably those that fix complement, augment EAE (Linington et al., 1989; Morris-Downes et al., 2002; Piddlesden et al., 1993; Menon et al., 1997; Mead et al., 2002; Hundgeburth et al., 2013). In addition, MOG antibodies have functional effects on oligodendrocyte inducing stress, physiological and morphological changes (Duvanel et al., 2004; Marta et al., 2005) and have recently been shown to trigger T cell activation by opsonisation of endogenous antigen (Kinzel et al., 2016). It is clear that pathogenic antibodies, possibly secondarily to damage, are generated during disease progression in MS (Willis et al., 2015) and can cause demyelination and pathology when injected in to animals (Linington et al., 1988; Morris-Downes et al., 2002). However, it appears that autoreactive T cells are necessary for the clinical disease to develop. It was shown in animals studies that T cells initiate the blood-brain barrier disturbances that facilitate entry of B cells and immunoglobulins into the CNS. Once in the CNS autoantibodies bind to oligodendrocytes and myelin, activate complement and induce demyelination that subsequently enhances inflammation and increases EAE severity.

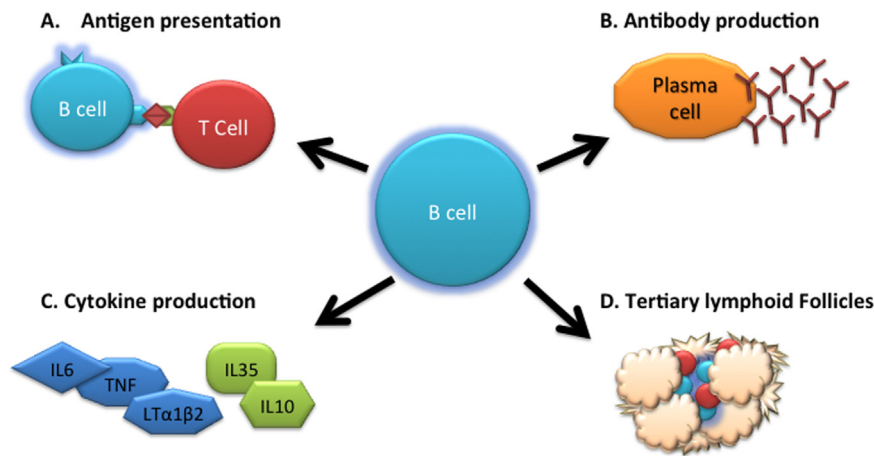
## 3. B cell as immune modulators

Emerging evidence using B cell-deficient mice has revealed a complex role for B cells in antigen presentation, cytokine production and immune regulation during EAE (Fig. 1). While early studies showed that depletion of IgM from birth prevented B cell maturation and subsequent EAE induction (Willenborg and Prowse, 1983), recent evidence for B cells in EAE comes from studies using the MOG EAE model in C57BL/6 following genetic ablation or B cell depletion using antibodies directed to CD20 (Table 1). These studies suggest that B cells are necessary for EAE induced with recombinant MOG protein but not MOG<sup>35–55</sup> EAE, revealing the critical impact of the source and nature of immunogens (Weber et al., 2010). This difference in EAE induction

**Table 1**  
Outcome of MOG-induced EAE in WT and B cell deficient mice.

Antigen	Mutation or treatment	EAE Course	Antibody or Bell requirement	Reference
(m)recMOG	Biozzi ABH mice Biozzi mice + MOG antibodies	Chronic relapsing Increased EAE severity Augmented demyelination	Yes	Amor et al., 1994 Morris-Downes et al., 2002
(m)SCH	Biozzi mice + Rituximab	No effect on EAE	No	D Baker - Unpublished
(m)MOG <sup>35–55</sup>	Biozzi ABH	Monophasic chronic	No	Amor et al., 2005
(m)recMOG	WT C57BL/6	Chronic EAE	No	Lyons et al., 1999
	$\mu$ MT C57BL/6	No EAE		
	CD20+ cell depletion	Not known		
(r)MOG	WT C57BL/6	Chronic EAE	No	Oliver et al., 2003
	$\mu$ MT C57BL/6	Chronic EAE		
	CD20+ cell depletion	Not known		
(h)recMOG	WT C57BL/6	Chronic	Yes	Oliver et al., 2003
	$\mu$ MT C57BL/6	No EAE		
	B cell depletion	Not known		
(m)MOG <sup>35–55</sup>	WT C57BL/6	Chronic	No	Lyons et al., 1999
	Mouse specific CD20+ cell depletion	Severe or reduced EAE depends on timing of CD20 depletion	Yes	Matsushita et al., 2008

MOG – myelin oligodendrocyte glycoprotein, m – mouse; h – human; recMOG – recombinant MOG; WT – wild type;  $\mu$ MT – Knock-out mice that lack functional B cells.



**Fig. 1.** The multifunctional roles of B cells in EAE and MS. A) B cells act as antigen presenting cells that activate autoreactive T cells. B) B cells mature to plasma cells that produce antibodies including CNS reactive autoantigens. C) Mature B cells process antigens, and once activated produce pro- and anti-inflammatory cytokines important in D) the development of tertiary lymphoid tissue. B cells also harbor Epstein-Barr Virus (EBV) thought to a key etiological agent in MS.

**Table 2**  
B cell production of cytokines during EAE.

Cytokine	Produced via	Effect mechanism	Effect on EAE	Reference
<b>LT1<math>\alpha</math>2<math>\beta</math></b>	FDCs and CXCL13	Follicle formation	Increased inflammation	Magliozzi et al., 2004, 2007
<b>TNF</b>	LT1 $\alpha$ 2 $\beta$	Increased IFN- $\gamma$ and inflammation	Increased severity	Menrad et al., 2007; Matejuk et al., 2002
<b>IL-6</b>	Innate receptors	Increased ICAM and VCAM expression. Increased T cell infiltration	Increased severity	Okuda et al., 1998; Eugster et al., 1998
<b>IL-10</b>	CD40 and B7	Increased Tregs, decreased inflammation	Reduced severity	Btellini et al., 1998; Fillatreau et al., 2002; Matsushita et al., 2008
<b>IL-35</b>	TLR4 and CD40	Decreased APC function	Reduced severity	Shen et al., 2014

Abbreviations: APC – antigen presenting cell; IL – Interleukin; Tregs – regulatory T cells, TLR – Toll-Like receptor, FDCs – Follicular Dendritic Cells, CXCL13 – Chemokine CXCL13-motif Ligand 13.

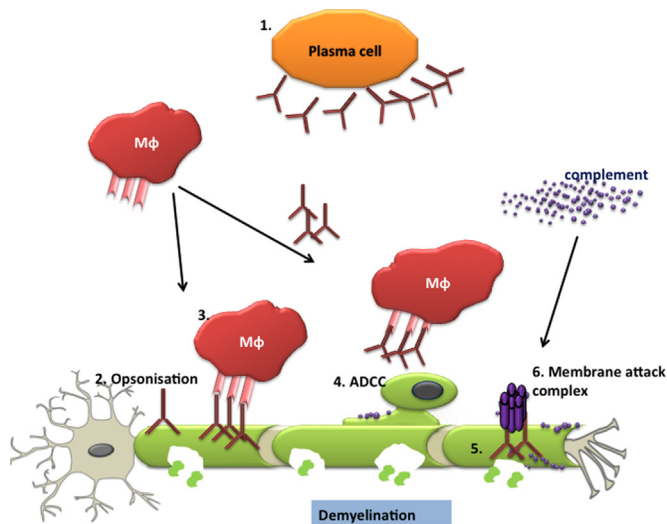
can be explained by the role of B cells to differentially present MOG protein and peptide (Weber et al., 2010). While genetic ablation of MHC class II antigens on B cells abrogates antigen presentation of MOG to T cells and thus inhibits EAE induction (Molnarfi et al., 2013), antigen presentation by B cells and thus EAE induction requires dendritic cells (Parker et al., 2015). Next to the requirement of MHC class II the expression of T cell costimulatory molecules expressed by B cells, such as CD80/CD86 and CD40, plays a crucial role in EAE (Mann et al., 2007; Ray et al., 2011). While mice (in this case B10.PL) in which B cells lack co-stimulatory CD80/CD86 molecules develop EAE, they fail to recover from acute disease due to a delay in IL-10 production and mobilization of Foxp3 regulatory T cells (Mann et al., 2007). In addition, B cells produce pro-inflammatory and anti-inflammatory cytokines that impact on EAE (Molnarfi et al., 2013) (Table 2).

B cells secrete lymphotoxin  $\alpha$ 1- $\beta$ 2 (LT $\alpha$ 1 $\beta$ 2) essential for lymph node expansion and development of tertiary lymphoid tissue, which are sometimes present in the CNS during EAE (Lassmann et al., 2011). LT $\alpha$ 1 $\beta$ 2 is observed in the CNS during EAE in SJL mice (Magliozzi et al., 2004; Columba-Cabezas et al., 2006) and clinical disease is prevented with antibodies to LT $\alpha$ 1 $\beta$ 2 receptor, due to inhibition of CXCL13 important for lymphoid follicle development (Columba-Cabezas et al., 2006). Antigen activated B cells also produce TNF, a key cytokine in EAE (Matejuk et al., 2002). Another B cell-derived cytokine is interleukin-6 (IL-6) that is increased during EAE. That IL-6 production by B cells is key for EAE induction has been shown following B cell depletion studies in mice (Barr et al., 2012). A mechanism by which IL-6 may contribute to EAE is by regulating T cell infiltration into the CNS since expression of ICAM-1 and VCAM-1 are absent in IL-6 deficient mice (Eugster et al., 1998). B cells also produce IL-10 as well as IL-35; cytokines that reduce EAE severity. This is supported by studies in which

regulatory B cells (Bregs) extracted from mice during EAE remission, produce IL-10 in a CD40 dependent manner and, following transfer into mice with active EAE induce recovery (Fillatreau et al., 2002). Thus, IL-10 producing Bregs are important for disease recovery. Furthermore, IL-10-producing B cells play an important role in EAE initiation by down-regulating the conditions leading to T cell CNS infiltration (Matsushita et al., 2008, 2010). Finally, IL-35 producing B cells also control EAE severity since mice lacking these B cells develop exacerbated EAE. IL-35 regulates APC functions of B cell that together with IL-10 induces differentiation of plasma cells. Mice in which B cells lack IL-35 have stronger antigen presentation capabilities, this is associated with stronger inflammatory responses and more severe EAE (Shen et al., 2014).

#### 4. B cells and autoantibodies in MS

B cells, plasma cells, plasmablasts and antibodies directed to oligodendrocytes, myelin and neurons are detectable in peripheral blood and the cerebrospinal fluid (CSF) of people with MS (pwMS) (Olsson et al., 1990; van Noort et al., 2006; Amor et al., 2014). In the CSF oligoclonal IgG bands (OCBs), present in 95% pwMS, are an established diagnostic tool for MS. That immunoglobulins may play a role in disease is reflected by the close association of lesions to CSF flow such as ventricular and subpial lesions, and that OCB-negative patients are characterized by less global and regional brain atrophy (Ferreira et al., 2014). Further support comes from a study showing that clonally expanded plasma cells from the CSF of pwMS induce myelin damage in vitro, thus implicating intrathecal IgG in MS pathogenesis (Blauth et al., 2015). In addition the CNS immunoglobulins and complement deposits are present on disintegrated myelin sheath and demyelinating lesions (Raine et al.,



**Fig. 2.** Antibody functions in MS and EAE. The primary effect of pathogenic antibodies is induction of tissue damage. Anti-myelin antibodies produced by plasma cells (1) attach to myelin leading to opsonisation (2). Macrophages bearing FcR bind to antibody on myelin (3). Alternatively, macrophages bind immunoglobulin via FcR receptors (4) that then bind to myelin inducing antibody dependent cell mediate cytotoxicity (ADCC). Antibodies on myelin (5) trigger complement activation leading to the formation of membrane attack complex (MAC) and cell death (6).

1999; Lucchinetti et al., 2000; Storch et al., 1998), indicating that like EAE CNS reactive antibodies mediate demyelination and neuronal damage (Fig. 2); findings that have been confirmed in vitro studies (Zhou et al., 2006; Blaith et al., 2015). In addition, the finding of B cell follicle-like structures as well as chemokines and cytokines that support B cell development all provide support for a key role of B cells, plasma cells and autoantibodies in MS pathogenesis. Like EAE, B cells extracted from pwMS and stimulation with CD40L and IL-4 have been shown to present myelin specific antigens to autoreactive T cells (Harp et al., 2008) indicating that B cells also have the capacity for antigen presentation in MS.

Moreover, B cell follicles have been reported in the meninges of people with secondary progressive MS (pwSPMS; Serafini et al., 2004), although this is controversial since follicles are not present in all pwSPMS and MS cohorts (Peferoen et al., 2007). In pwMS in which follicles are observed, the presence of the ectopic follicles were more pronounced in younger patients with more severe disease than the group in which follicles were not observed (Maggiolzi et al., 2007). The number of these B cells characterized by up regulated chemokine receptors to CXCL13 (Corcione et al., 2004), were significantly higher in the CSF as compared to blood. Together with LT1 $\alpha$ 2 $\beta$ , CXCL13 has been found in the CSF and MS brain tissue in active lesions (Corcione et al., 2004; Krumbholz et al., 2006) and may thus contribute to disease severity by aiding inflammation. In support of this, B cell follicles and meningeal infiltrates have been associated with cortical grey matter lesions widely considered to contribute to cognitive decline in MS (Maggiolzi et al., 2007). How these follicles arise is as yet unknown, although several studies suggest strong association with EBV widely considered to be an etiological agent in MS.

There is also clinical evidence for regulatory B cell functions in MS (Fillatreau et al., 2002; Shen et al., 2014). Recently a subset of IL-10 producing B cells has been identified in blood of healthy controls and pwMS (Iwata et al., 2011) in which production is lower in pwMS and then restored or increased via therapy (Özenci et al., 2000). As in rodents production of IL-10 in human B cells increases following treatment with CD40L, lipopolysaccharide (LPS) or CpG. Together the gathered data on the role for B cells in MS and EAE demonstrates its involvement in antigen presentation,

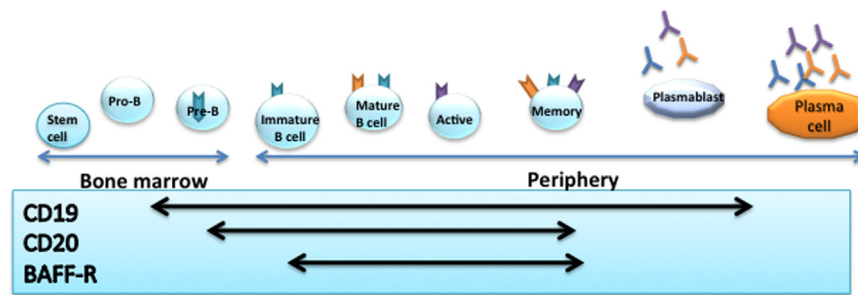
cytokine production and T cell activation. This abundant evidence demonstrates that the role of B cells in MS pathology is not merely antibody production. Therefore targeting B cell in the treatment of MS has been a rational approach towards improving the MS pathology.

## 5. B cell therapies

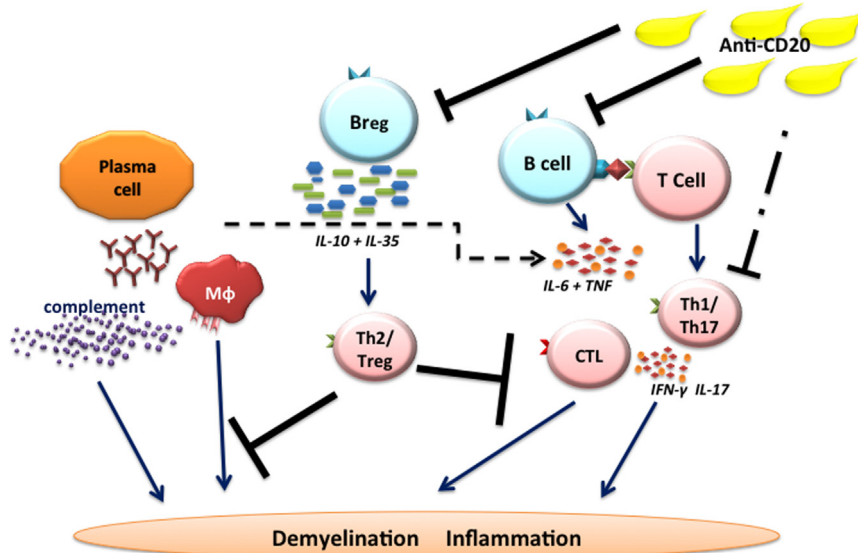
Many current therapies for MS also inhibit or modify B cell function. For example the cytostatic agents mitoxantrone, cyclophosphamide preferentially kill B cells due to their high basal proliferation rate (Fox 2004), alemtuzumab depletes T and B cells (Ruck et al., 2015) and glatiramer acetate reduces B cells numbers in subset of pwMS (Rovituso et al., 2015). Likewise, fingolimod decreases memory B cells but increases naive B cells (Claes et al., 2014) while dimethyl fumarate is reported to also reduce B cells numbers (Spencer et al., 2015). In contrast, natalizumab increases circulating B cells while IFN- $\beta$  treatment increases CD19, CD24, CD38 B cells in peripheral blood, although whether B cells in the CNS are affected has not been reported. Cladribine is a highly effective depleting agent of peripheral B cells, compared to T cells (Mitosek-Szewczyk et al., 2013) and through targeting dividing and non-dividing lymphocytes inhibits lesion formation in both relapsing MS and progressive MS (Rice et al., 2000; Giovannoni et al., 2010). It is the only MS disease-modifying agent that is CNS penetrant, with an immunomodulatory action that is active in the CNS, which has the capacity to target plasma cells and can inhibit oligoclonal band protein formation (Sipe et al., 1994). Whilst efficacy in relapsing MS has been reported (Giovannoni et al., 2010), trials in progressive MS were too short to determine efficacy in progression (Rice et al., 2000). Unfortunately, due to probably unfounded concerns on safety, oral cladribine was withdrawn (Pakpoor et al., 2015). In summary, although studies clearly reveal the multifunctional roles of B cells in MS several therapeutic approaches can be applied to modulate B cell functions.

### 5.1. CD20 targeted therapy

Three anti-CD20 antibodies rituximab, a chimeric human/mouse IgG1 antibody; ocrelizumab, a humanized antibody, and ofatumumab, a full recombinant human IgG1 antibody have been used in clinical trials for MS (Hauser et al., 2008; Kappos et al., 2011; Sorensen et al., 2014). All antibodies deplete cells expressing CD20, a surface antigen present on maturing B cells, from pre-B cells to plasmablasts, precursors of plasma cells (Fig. 3), as well as a population of T cells. The first study of rituximab, conducted in 5 people with primary progressive MS (pwPPMS), showed that most peripheral blood B cells were depleted until 14 months (Monson et al., 2005). The depletion of CSF B cells was less efficient. A phase I open study, designed to assess the drug safety and tolerability in RRMS did not reveal serious adverse effects (Bar-Or et al., 2008). Clinical trials that followed showed that B cell depletion effectively suppressed MS disease activity (Hauser et al., 2008; Hawker et al., 2009; Kappos et al., 2011). In a double-blind placebo-controlled phase II trial, rituximab reduced newly formed CNS lesions and relapses in relapsing remitting MS (RRMS) (Hauser et al., 2008). Studies with ocrelizumab, reduced gadolinium-enhancing lesions in RRMS by 89% compared to placebo and Interferon  $\beta$  (Kappos et al., 2011) and inhibited relapsing MS and lesion formation in phase III trials (Hauser et al., 2015). Ocrelizumab has shown some positive results in PPMS in the phase III trial (Montalban et al., 2015). Here, the study focused on younger people with active disease and closer to progressive onset of MS, based on the responder profile of an earlier trial in PPMS with rituximab (Hawker et al., 2009). Lastly, ofatumumab, an approved



**Fig. 3.** B cell development. CD19 is highly expressed throughout B cell development but not on terminally differentiated plasma cells. CD20 is expressed on the majority of B cell subtypes but is down-regulated in plasmablasts. B cell activating factor receptor (BAFF-R) is expressed later in development from immature B cells to plasmablasts.



**Fig. 4.** Effect of anti-CD20 antibody in MS. Anti-CD20 antibody binds to and depletes CD20<sup>+</sup> cells, including CD20<sup>+</sup> pro-inflammatory CD4 and CD8 cells, involved in CNS inflammation and demyelination. Breg – regulatory B cells, Mφ – macrophage CTL: cytotoxic T cell.

drug for chronic lymphocytic leukemia is expected to be far less antigenic than rituximab. This was examined in RRMS, revealing over 99% reduction in newly formed lesions in RRMS compared to controls. No increase in adverse effects was noticed in treated compared to controls (Sorensen et al., 2014). While CD20 targeting therapies reduce MS lesions and clinical relapses the immunoglobulin levels are not significantly affected (Hauser et al., 2008), not surprisingly since plasma cells do not express CD20 and are therefore not depleted. This suggests that CD20<sup>+</sup> cell depletion interferes with antigen presentation, T cell activation or cytokine production (Fig. 4). The preclinical findings in EAE showing that B cells polarize T cell differentiation were confirmed in pwRRMS treated with anti-CD20 antibody treatment, emphasizing the APC function of B cells in RRMS (Bar-Or et al., 2010). The number of CSF T cells also decreased following treatment in the majority of RRMS patients (Cross et al., 2006).

### 5.2. CD20<sup>+</sup> T cells

In addition to the effect on B cell function and thereby indirectly affecting T cells, emerging evidence shows that anti-CD20 antibody therapies also directly affect CD20<sup>+</sup> T cells. Interestingly, evidence for the direct T cell effect was suggested in early rituximab studies for treatment of rheumatoid arthritis (Wilk et al., 2009) who also reported CD20<sup>+</sup> T cells in peripheral blood of healthy people and those with rheumatoid arthritis (Wilk et al., 2009). CD20<sup>+</sup> cells comprise both CD8 and CD4 T cell subtypes and are depleted with CD20<sup>+</sup> B cells during rituximab therapy

(Wilk et al., 2009). Data from RRMS supports the presence of CD20<sup>+</sup> T cells in the peripheral blood and CSF in pwMS (Palanichamy et al., 2014) and cerebral subventricular white matter samples (Holley et al., 2014). Since CD20 expression is lower on CSF T cells was less noticeable, they were characterized as CD20<sup>dim</sup> T cells that are both CD8<sup>+</sup> and CD4<sup>+</sup>. Interestingly, CD20-specific antibodies predominantly depleted CD8<sup>+</sup> CD20<sup>dim</sup> T cells although the overall CD4/CD8 ratio remained unchanged (Palanichamy et al., 2014). In the CNS, particularly in active MS lesions, T cells are CD20<sup>high</sup> and express IL-17 and IFN-γ indicating a more pro-inflammatory profile (Holley et al., 2014) suggesting that CD20-specific immunotherapy may thus modify disease by directly depleting inflammatory CD20<sup>high/dim</sup> T cells. Furthermore, it was demonstrated that rituximab was most effective in controlling EAE in human CD20 transgenic mice when antibody treatment induced marked T cell depletion (Weber et al., 2010).

### 5.3. Risks of infection

Due to the broad B cell target, anti-CD20 antibodies also deplete B cells that regulate immune responses including those controlling viruses. Incidental cases of progressive multifocal leukoencephalopathy (PML) in people treated with rituximab with other immune disorders have been observed (Clifford et al., 2011), which suggests a risk of PML development in MS. Furthermore, ocrelizumab development in rheumatoid arthritis and systemic lupus erythematosus was halted because it was linked to serious life-threatening infections (Tak et al., 2012). However,

development of B cell depletion has a better risk: benefit profile in MS, because of the poor prognosis of MS. Whilst it has similar levels of efficacy to alemtuzumab in relapsing MS (Coles et al., 2012; Cohen et al., 2012; Kappos et al., 2011), it does not cause the high incidence of secondary B cell autoimmunities following treatment with alemtuzumab (Cohen et al., 2012; Tuohy et al., 2015) thus making it an attractive new treatment for MS.

## 6. Novel B cell targeting therapies

Anti-CD19 therapy, under development for neuromyelitis optica has also been suggested as a new treatment for MS. This approach targets B cells including plasma blasts and short-lived plasma cells (Stüve et al., 2014), thereby reducing the levels of pathogenic antibodies (Stüve et al., 2014). MEDI-551, a humanized anti-CD19 IgG1 antibody has been reported to reduce lesions in RRMS (Aguis et al., 2015). The humanized antibody is able to bind and deplete a broader range of B cells but its method of action is similar to that of anti-CD20. In a humanized CD19 B cell animal model, anti-CD19 treatment could reduce antibody levels because of its ability to deplete plasma blasts (Yazawa et al., 2005). In a CD19 and CD20 transgenic animal model, MEDI-551 depletes B cells by depleting pro-B cells, delaying B cell renewal (Agius et al., 2015; Herbst et al., 2010). However, such approaches might lead to more adverse events such as PML or opportunistic infections otherwise controlled by humoral immune responses in the CNS. In view of this VAY736, directed against the B-cell activating factor receptor (BAFF-R) has been designed to reduce the B cell fostering milieu in the CNS (Krumbholz et al., 2005; Magliozzi et al., 2004). Upon binding to its receptor, BAFF aids B cell survival but it is also involved in B cell development and B cell mediated meningeal follicle formation (Magliozzi et al., 2004). Since BAFF is elevated in MS, targeting the BAFF-R prevents its binding to take place thereby reducing B cell survival and lymphoid follicle-like structures. BAFF-R deficient mice with EAE had fewer mature B cells and increased EAE severity, suggesting a predominant effect on Breg (Sasaki et al., 2004; Kim et al., 2011). Similarly increased disease severity was also shown with atacicept, a BAFF-immunoglobulin fusion protein that targets BAFF receptor and A Proliferation-Inducing ligand (APRIL). However, the study was halted after increased inflammatory activity was observed in pwRRMS (Hartung et al., 2010) demonstrating that B cell depletion is not universally a predictable and positive therapeutic effect, as was shown in initial studies in EAE, when B cell depletion inhibited, was ineffective or augmented disease (Matsushita et al., 2008).

## 7. Future perspectives and concluding remarks

Active RR- and PPMS is inhibited by peripheral B cell depletion with CD20-depleting antibodies, which may also be active in the CNS due to blood-brain barrier disturbances (Bonnar et al., 2014; Hauser et al., 2015; Montalban et al., 2015). The thought that central B cell activity may drive progressive MS has led to the idea of targeting B cells via local administration (Bonnar et al., 2014; Svenningsson et al., 2015). Yet, intrathecal administration of B cell targeting therapies fails to induce marked B cell depletion within the CNS and simply drains from the natural flow of CSF into the circulation and depletes peripheral B cells (Komori et al., 2016; Topping et al., 2016). Therefore, it remains to be established whether intraventricular CD20 B cell depletion would have merit in targeting CNS-B cells or whether novel plasma cell depleting antibodies (Moreau et al., 2014) will be necessary to target ectopic B cell follicles in the CNS.

Immunodepleting agents, especially if used early after

diagnosis, can induce long-term no-evidence of Disease Activity (NEDA; Giovannoni et al., 2015) in MS (Tuohy et al., 2015). For many years MS has been thought to be a T cell mediated disease, largely due to similarities with EAE (Baker and Amor, 2014). With the knowledge that antibodies and B cells play a significant role in MS, B cell targeted therapies have been developed and have been found to have marked inhibitory activity on active MS although there are so far no surrogate markers to monitor efficacy. Success in treating relapsing and progressive MS by B cell therapy, has been hailed as the beginning of the end of the neurodegeneration of progressive MS (Steinman and Zamvil, 2016), however this remains to be established especially as inhibiting peripheral autoimmunity does not appear to stop EAE (Al-Izki et al., 2011) or MS following haematopoietic stem cell therapy (Burt et al., 2015). Even though there has been much focus on T cell autoimmunity in MS, it is clear that the highly effective agents can target B cells. Although the etiology of MS is unknown, it is clear that genetics and environmental factors contribute to susceptibility to MS. One consistent feature of MS is the potential role of EBV as a trigger of disease activity (Pakpoor et al., 2013). Given that EBV readily infects B cells another mechanism by which B cell depletion may operate removal of this etiological trigger of relapsing MS (Pakpoor et al., 2013).

It is clear that broad B cell targeted depletion carries risks, notably associated with risks of infection. However, compared to drugs of similar efficacy such as natalizumab and alemtuzumab the adverse events may even be favorable. Yet, there is much to be learned about how B cells contribute to the regulation and pathogenesis of autoimmunity given the balance between B regulatory and B effector cell functions as shown EAE and MS. Irrespective of this it appears that depletion of CD20+ B cells offers promise as a disease modifying therapy of MS and it will probably gain approval for treatment of MS.

## Conflict of interests

The authors declare no conflict of interest.

## References

- Agius, M., Klodowska-Duda, G., Maciejowski, M., Potemkowski, A., Sweeny, S., Li, J., Yao, W., Patra, N., Ratchford, J.N., Katz, E., Flor, A., 2015. Safety and tolerability of MEDI-551 in patients with relapsing forms of multiple sclerosis: results from a phase 1 randomised, placebo-controlled, escalating intravenous and subcutaneous dose study. *Mult. Scler. J.* 21 (SII), 235–236.
- Al-Izki, S., Pryce, G., Jackson, S.J., Giovannoni, G., Baker, D., 2011. Immunosuppression with FTY720 is insufficient to prevent secondary progressive neurodegeneration in experimental autoimmune encephalomyelitis. *Mult. Scler.* 17, 939–948.
- Amor, S., Groome, N., Lington, C., Morris, M.M., et al., 1994. Identification of epitopes of myelin oligodendrocyte glycoprotein for the induction of experimental allergic encephalomyelitis in SJL and Biozzi AB/H mice. *J. Immunol.* 153, 4349–4356.
- Amor, S., Smith, P.A., Hart, B., Baker, D., 2005. Biozzi mice: of mice and human neurological diseases. *J. Neuroimmunol.* 165, 1–10.
- Amor, S., van der Star, B.J., Bosca, I., Raffel, J., Gnanapavan, S., Watchorn, J., Kuhle, J., Giovannoni, G., Baker, D., Malaspina, A., Puentes, F., 2014. Neurofilament light antibodies in serum reflect response to natalizumab treatment in multiple sclerosis. *Mult. Scler.* 20, 1355–1362.
- Apple, Borstein, 1964. The application of tissue culture to the study of experimental allergic encephalomyelitis: II serum factors responsible for demyelination. *J. Exp. Med.* 119, 303–312.
- Baker, D., Amor, S., 2014. Experimental autoimmune encephalomyelitis is a good model of multiple sclerosis if used wisely. *Mult. Scler. Relat. Disord.* 3, 555–564.
- Bar-Or, A., Calabresi, P.A., Arnold, D., Markowitz, C., et al., 2008. Rituximab in relapsing-remitting multiple sclerosis: a 72-week, open-label, phase I trial. *Ann. Neurol.* 63, 395–400.
- Bar-Or, A., Fawaz, L., Fan, B., Darlington, P.J., et al., 2010. Abnormal B-cell cytokine responses a trigger of T-cell-mediated disease in MS? *Ann. Neurol.* 67, 452–461.
- Barr, T.A., Shen, P., Brown, S., Lampropoulou, V., et al., 2012. B cell depletion therapy ameliorates autoimmune disease through ablation of IL-6-producing B

- cells. *J. Exp. Med.* 209, 1001–1010.
- Baxter, A.G., 2007. The origin and application of experimental autoimmune encephalomyelitis. *Nat. Rev. Immunol.* 7, 904–912.
- Bettelli, E., Das, M.P., Howard, E.D., Weiner, H.L., et al., 1998. IL10 is critical in the regulation of autoimmune encephalomyelitis as demonstrated by studies of IL-10 and IL-4 deficient and transgenic mice. *J. Immunol.* 161, 3299–3306.
- Blauth, K., Soltys, J., Matschulat, A., Reiter, C.R., Ritchie, A., Baird, N.L., Bennett, J.L., Owens, G.P., 2015. Antibodies produced by clonally expanded plasma cells in multiple sclerosis cerebrospinal fluid cause demyelination of spinal cord explants. *Acta Neuropathol.* 130, 765–781.
- Bonnan, M., Ferrari, S., Bertandeau, E., Demasles, S., Krim, E., Miquel, M., Barroso, B., 2014. Intrathecal rituximab therapy in multiple sclerosis: review of evidence supporting the need for future trials. *Curr. Drug Targets* 15, 1205–1214.
- Brück, W., Gold, R., Brett, Oreja-Guevara, C., et al., 2013. Therapeutic decision in multiple sclerosis: moving beyond efficacy. *JAMA Neurol.*, 1315–1324.
- Burt, R.K., Balabanov, R., Han, X., Sharrack, B., Morgan, A., Quigley, K., Yang, K., Helenowski, I.B., Jovanovic, B., Spahovic, D., Arnaudovic, I., Lee, D.C., Benefield, B. C., Futterer, S., Oliveira, M.C., Burman, J., 2015. Association of nonmyeloablative hematopoietic stem cell transplantation with neurological disability in patients with relapsing-remitting multiple sclerosis. *JAMA* 313, 275–284.
- Claes, N., Dhaeze, T., Fraussen, J., Broux, B., Van Wijmeersch, B., Stinissen, P., Hupperts, R., Hellings, N., Somers, V., 2014. Compositional changes of B and T cell subtypes during fingolimod treatment in multiple sclerosis patients: a 12-month follow-up study. *PLoS One* 9 (10), e111115.
- Clifford, D.B., Ances, B., Costello, C., Rosen-Schmidt, S., Andersson, M., Parks, D., Perry, A., Yerra, R., Schmidt, R., Alvarez, E., Tyler, K.L., 2011. Rituximab-associated progressive multifocal leukoencephalopathy in rheumatoid arthritis. *Arch. Neurol.* 68, 1156–1164.
- Cohen, J.A., Coles, A.J., Arnold, D.L., Confavreux, C., Fox, E.J., Hartung, H.P., Havrdova, E., Selmaj, K.W., Weiner, H.L., Fisher, E., Brinar, V.V., Giovannoni, G., Stojanovic, M., Ertik, B.I., Lake, S.L., Margolin, D.H., Panzara, M.A., Compston, D.A., 2012. CARE-MS I investigators. Alemtuzumab versus interferon beta 1a as first-line treatment for patients with relapsing-remitting multiple sclerosis: a randomised controlled phase 3 trial. *Lancet* 380, 1819–1828.
- Coles, A.J., Twyman, C.L., Arnold, D.L., Cohen, J.A., Confavreux, C., Fox, E.J., Hartung, H.P., Havrdova, E., Selmaj, K.W., Weiner, H.L., Miller, T., Fisher, E., Sandbrink, R., Lake, S.L., Margolin, D.H., Oyuela, P., Panzara, M.A., Compston, D.A., 2012. CARE-MS II investigators. Alemtuzumab for patients with relapsing multiple sclerosis after disease-modifying therapy: a randomised controlled phase 3 trial. *Lancet* 380, 1829–1839.
- Columba-Cabezas, S., Griguoli, M., Rosicarelli, B., Magliozzi, R., et al., 2006. Suppression of established experimental autoimmune encephalomyelitis and formation of meningeal lymphoid follicles by lymphotoxin  $\beta$  receptor-Ig fusion protein. *J. Neuroimage* 179, 76–86.
- Corcione, A., Casazza, S., Ferretti, E., Glunti, D., et al., 2004. Recapitulation of B cell differentiation in the central nervous system of patients with multiple sclerosis. *Proc. Natl. Acad. Sci. USA* 101, 11064–11069.
- Cross, A.H., Stark, J.L., Lauber, J., Ramsbottom, M.J., Lyons, J.A., 2006. Rituximab reduces B cells and T cells in cerebrospinal fluid of multiple sclerosis patients. *J. Neuroimmunol.* 180 (1–2), 63–70.
- Duvanel, C.B., Monnet-Tschudi, F., Braissant, O., Matthieu, J.M., Honegger, P., 2004. Tumor necrosis factor- $\alpha$  and  $\alpha$ B-crystallin up-regulation during antibody-mediated demyelination in vitro: a putative protective mechanism in oligodendrocytes. *J. Neurosci. Res.* 78 (5), 711–722.
- Eugster, H.P., Frei, K., Kopf, M., Lassman, H., et al., 1998. IL-6-deficient mice resist myelin oligodendrocyte glycoprotein-induced autoimmune encephalomyelitis. *Eur. J. Immunol.* 28, 2178–2187.
- Ferreira, D., Voevodskaya, O., Imrell, K., Stawiarz, L., Spulber, G., Wahlund, L.O., Hillert, J., Westman, E., Karrenbauer, V.D., 2014. Multiple sclerosis patients lacking oligoclonal bands in the cerebrospinal fluid have less global and regional brain atrophy. *J. Neuroimmunol.* 274 (1–2), 149–154.
- Fillatreu, S., Sweeney, C.H., McGeachy, M.J., Gray, D., et al., 2002. B cells regulate autoimmunity by provision of IL-10. *Nature* 3, 944–950.
- Giovannoni, G., Turner, B., Gnanapavan, S., Offiah, C., Schmierer, K., Marta, M., 2015. Is it time to target no evident disease activity (NEDA) in multiple sclerosis? *Mult. Scler. Relat. Disord.* 4 (4), 329–333.
- Giovannoni, G., Comi, G., Cook, S., Rammohan, K., Rieckmann, P., Soelberg Sørensen, P., Vermersch, P., Chang, P., Hamlett, A., Musch, B., Greenberg, S.J., CLARITY Study Group, 2010. A placebo-controlled trial of oral cladribine for relapsing multiple sclerosis. *N. Engl. J. Med.* 362 (5), 416–426.
- Gold, R., Linington, C., Lassmann, H., 2006. Understanding pathogenesis and therapy of multiple sclerosis via animal models: 70 years of merits and culprits in experimental autoimmune encephalomyelitis research. *Brain* 129, 1953–1971.
- de Graaf, K.L., Albert, M., Weissert, R., 2012. Autoantigen conformation influences both B- and T-cell responses and encephalitogenicity. *J. Biol. Chem.* 18 (287), 17206–17213.
- Harp, C., Lovett-Racke, A., Racke, M., Frohman, E., et al., 2008. Impact of myelin-specific antigen presenting B cells on T cell activation in multiple sclerosis. *Clin. Immunol.* 128, 382–391.
- Hartung, H.P., Kieseier, B.C., 2010. Atacicept: targeting B cells in multiple sclerosis. *Ther. Adv. Neurol. Disord.* 3, 205–216.
- Hauser, S.L., Waubant, E., Arnold, D.L., Vollmer, T., et al., 2008. B-cell depletion with rituximab in relapsing-remitting multiple sclerosis. *N. Engl. J. Med.* 358, 676–688.
- Hauser, S.L., Comi, G.C., Hartung, H.-P., Selmaj, K., Traboulsee, A., Bar-Or, A., Arnold, D. L., Klingelschmitt, G., Kakariaka, A., Lublin, F., Garren, H., Kappos, L., on behalf of the OPERA I and II clinical investigators, 2015. Efficacy and safety of ocrelizumab in relapsing multiple sclerosis - results of the interferon-beta-1a-controlled, doubleblind, phase III OPERA I and II studies. *Mult. Scler. J.* 21 (SII), 61–62.
- Hawker, K., O'Connor, P., Freedman, M., Calabresi, P., Antel, J., et al., 2009. Rituximab in patients with primary progressive multiple sclerosis: results of a randomized double-blind placebo-controlled multicenter trial. *Ann. Neurol.* 66, 460–471.
- Herbst, R., Wang, Y., Gallagher, S., Mittereder, N., Kuta, E., Damschroder, M., Woods, R., Rowe, D.C., Cheng, L., Cook, K., Evans, K., Sims, G.P., Pfarr, D.S., Bowen, M.A., Dall'Acqua, W., Shlomchik, M., Tedder, T.F., Kiener, P., Jallal, B., Wu, H., Coyle, A. J., 2010. B-cell depletion in vitro and in vivo with an afucosylated anti-CD19 antibody. *J. Pharmacol. Exp. Ther.* 335 (1), 213–222.
- Holley, J.E., Bremer, E., Kendall, A.C., de Bruyn, M., et al., 2014. CD20+ inflammatory T cells are present in blood and brain of multiple sclerosis patients and can be selectively targeted for apoptotic elimination. *Mult. Scler. Relat. Disord.* 3, 650–658.
- Hundgeburth, L.C., Wunsch, M., Rovituso, D., Recks, M.S., Addicks, K., Lehmann, P.V., Kuerten, S., 2013. The complement system contributes to the pathology of experimental autoimmune encephalomyelitis by triggering demyelination and modifying the antigen-specific T and B cell response. *Clin. Immunol.* 146, 155–164.
- Iwata, Y., Matshushita, T., Horikawa, M., DiLillo, D.J., et al., 2011. Characterization of a rare IL-10–competent B-cell subset in humans that parallels mouse regulatory B10 cells. *Blood* 117, 530–541.
- Kappos, L., Li, D., Calabresi, P., O'Connor, P., et al., 2011. Ocrelizumab in relapsing-remitting multiple sclerosis: A phase 2, randomised, placebo-controlled, multicenter trial. *Lancet* 378, 1779–1787.
- Kim, S.S., Richman, D.P., Zamvil, S.S., Agius, M.A., et al., 2011. Accelerated central nervous system autoimmunity in BAFF-receptor-deficient mice. *J. Neurosci.* 306, 9–15.
- Kinzel, S., Lehmann-Horn, K., Torke, S., Häusler, D., Winkler, A., Stadelmann, C., Payne, N., Feldmann, L., Saiz, A., Reindl, M., Lalive, P.H., Bernard, C.C., Brück, W., Weber, M.S., 2016. Myelin-reactive antibodies initiate T cell-mediated CNS autoimmune disease by opsonization of endogenous antigen. *Acta Neuropathol.*
- Kipp, M., Van der Star, B., Vogel, Y.S.V., Puentes, F., et al., 2012. Experimental in vivo and in vitro models of multiple sclerosis: EAE and beyond. *Mult. Scler. Relat. Disord.* 1, 15–28.
- Komori, M., Lin, Y.C., Cortese, I., Blake, A., Ohayon, J., Cherup, J., Maric, D., Kosa, P., Wu, T., Bielekova, V., 2016. Insufficient disease inhibition by intrathecal rituximab in progressive multiple sclerosis. *Ann. Clin. Transl. Neurol.* 3, 166–179.
- Krumbholz, M., Thiel, D., Cepok, S., Hemmer, B., et al., 2006. Chemokines in multiple sclerosis: CXCL12 and CXCL13 up-regulation is differentially linked to CNS immune cell recruitment. *Brain* 129, 200–211.
- Lassmann, H., Niedobitek, G., Aloisi, F., Middeldorp, J.M., NeuroproMiSe EBV Working Group, 2011. Epstein-Barr virus in the multiple sclerosis brain: a controversial issue – report on a focused workshop held in the Centre for Brain Research of the Medical University of Vienna, Austria. *Brain* 134, 2772–2786.
- Linington, C., Bradi, M., Lassmann, H., Brunner, C., et al., 1988. Augmentation of demyelination in rat acute allergic encephalomyelitis by circulating mouse monoclonal antibodies directed against a myelin/oligodendrocyte glycoprotein. *Am. J. Pathol.* 130, 443–454.
- Linington, C., Lassmann, H., Morgan, B.P., Compston, D.A., 1989. Immunohistochemical localisation of terminal complement component C9 in experimental allergic encephalomyelitis. *Acta Neuropathol.* 79, 78–85.
- Lucchinetti, C., Bruck, W., Parisi, J., Scheithauer, B., et al., 2000. Heterogeneity of multiple sclerosis lesions: Implications for the pathogenesis of demyelination. *Ann. Neurol.* 47, 707–717.
- Lyons, J.A., San, M., Happ, M.P., Cross, A.H., 1999. B cells are critical to induction of experimental allergic encephalomyelitis by protein but not by a short encephalitogenic peptide. *Eur. J. Immunol.* 29, 3432–3439.
- Magliozzi, R., Columba-Cabezas, S., Serafini, B., Aloisi, F., 2004. Intracerebral expression of CXCL13 and BAFF is accompanied by formation of lymphoid follicle-like structures in the meninges of mice with relapsing experimental autoimmune encephalomyelitis. *J. Neuroimage* 148, 11–23.
- Magliozzi, R., Howell, O., Serafini, B., Nicholas, R., et al., 2007. Meningeal B-cell follicles in secondary progressive multiple sclerosis associate with early onset of disease and severe cortical pathology. *Brain* 130, 1089–1104.
- Mann, M.K., Maresz, K., Shriver, L.P., Tan, Y., et al., 2007. B cell regulation of CD4 CD25 T regulatory cells and IL-10 Via B7 is essential for recovery from experimental autoimmune encephalomyelitis. *J. Immunol.* 178, 3447–3456.
- Marta, C.B., Oliver, A.R., Sweet, R.A., Pfeiffer, S.E., et al., 2005. Pathogenic myelin oligodendrocyte glycoprotein antibodies recognize glycosylated epitopes and perturb oligodendrocyte physiology. *Proc. Natl. Acad. Sci. USA* 102, 13992–13997.
- Matejuk, A., Dwyer, J., Ito, A., Bruender, Z., et al., 2002. Effects of cytokine deficiency on chemokine expression in CNS of mice with EAE. *J. Neuroimmunol.* 128, 680–688.
- Matshushita, T., Yanaba, K., Bouazi, J.D., Fujimoto, M., et al., 2008. Regulatory B cells inhibit EAE initiation in mice while other B cells promote disease progression. *J. Invasive Cardiol.* 118, 3420–3430.
- Matshushita, T., Horikawa, M., Iwata, Y., Tedder, T.F., 2010. Regulatory B cells (B10 cells) and regulatory T cells have independent roles in controlling EAE initiation and late-phase immunopathogenesis. *J. Immunol.* 185, 2240–2252.
- Mead, R.J., Singhrao, S.K., Neal, J.W., Lassmann, H., et al., 2002. The membrane attack complex of complement causes severe demyelination associated with

- acute axonal injury. *J. Immunol.* 168, 458–465.
- Menon, K.K., Piddlesden, S.J., Bernard, C.C.A., 1997. Demyelinating antibodies to myelin oligodendrocyte glycoprotein and galactocerebroside induce degradation of myelin basic protein in isolated human myelin. *J. Neurochem.* 69, 214–222.
- Menrad, L.C., Minns, L.A., Darche, S., Mielcarz, D.W., et al., 2007. B cells amplify IFN- $\gamma$  production by T cells via a TNF- $\alpha$ -mediated mechanism. *J. Immunol.* 179, 4857–4866.
- Mitosek-Szewczyk, K.I., Tabarkiewicz, J., Wilczynska, B., Lobejko, K., Berbecki, J., Nastaj, M., Dworzanska, E., Kolodziejczyk, B., Stelmasiak, Z., Rolinski, J., 2013. Impact of cladribine therapy on changes in circulating dendritic cell subsets, T cells and B cells in patients with multiple sclerosis. *J. Neurol. Sci.* 332, 35–40.
- Molnarfi, N., Schulze-Toppoff, U., Weber, M.S., Patarroyo, J.C., et al., 2013. MHC class II-dependent B cell APC function is required for induction of CNS autoimmunity independent of myelin-specific antibodies. *J. Exp. Med.* 210, 2921–2937.
- Monson, N.L., Cravens, P.D., Frohman, E.M., Hawker, K., et al., 2005. Effect of rituximab on the peripheral blood and cerebrospinal fluid B cells in patients with primary progressive multiple sclerosis. *Arch. Neurol.* 62, 258–264.
- Montalban, E., 2015. Efficacy and safety of Ocrelizumab in primary progressive multiple sclerosis- results of the placebo-controlled, double blind, phase III ORATORIO study. *ECTRIMS Congr.* 228.
- Moreau, P., Touzeau, C., 2014. Elotuzumab for the treatment of multiple myeloma. *Future Oncol.* 10 (6), 949–956.
- Morris-Downes, M.M., Smith, P.A., Rundle, J.L., Piddlesden, S.J., et al., 2002. Pathological and regulatory effects of anti-myelin antibodies in experimental allergic encephalomyelitis in mice. *J. Neuroimage* 125, 114–124.
- Okuda, Y., Sokada, S., Fujimura, H., Saeki, Y., et al., 1998. IL-6 plays a crucial role in the induction phase of myelin oligodendrocyte glycoprotein 35–55 induced experimental autoimmune encephalomyelitis. *J. Neuroimage* 101, 188–196.
- Oliver, A.F., Lyon, G.M., Huddle, N.H., 2003. Rat and human myelin oligodendrocyte glycoproteins induce experimental autoimmune encephalomyelitis by different mechanisms in C57BL/6 mice. *J. Immunol.* 171, 462–468.
- Olsson, T., Baig, S., Höjeberg, B., Link, H., 1990. Antimyelin basic protein and anti-myelin antibody-producing cells in multiple sclerosis. *Ann. Neurol.* 27, 132–136.
- Özenci, V., Kouwenhoven, M., Huang, Y.M., Kivisäkk, P., et al., 2000. Multiple sclerosis is associated with an imbalance between tumour necrosis factor- $\alpha$  (TNF- $\alpha$ ) and IL-10-secreting blood cells that is corrected by interferon- $\beta$  treatment. *Clin. Exp. Immunol.* 120, 147–153.
- Pakpoor, J., Giovannoni, G., Ramagopalan, S.V., 2013. Epstein-Barr virus and multiple sclerosis: association or causation? *Expert Rev. Neurother.* 13, 287–297.
- Pakpoor, J., Disanto, G., Altmann, D.R., Pavitt, S., Turner, B.P., Marta, M., Juliusson, G., Baker, D., Chataway, J., Schmierer, K., 2015. No evidence for higher risk of cancer in patients with multiple sclerosis taking cladribine. *Neurol. Neuroimmunol. Neuroinflamm.* 2, e158.
- Palanichamy, A., Jahn, S., Nickles, D., Derstine, M., et al., 2014. Rituximab efficiently depletes increased CD20-expressing T cells in multiple sclerosis patients. *J. Immunol.* 193, 580–586.
- Parker, C.R., Archambault, A.S., Sim, J., Ferris, S.T., et al., 2015. B cell antigen presentation is sufficient to drive neuroinflammation in an animal model of multiple sclerosis. *J. Immunol.* 194, 5077–5084.
- Peferoen, L.A., Lamers, F., Lodder, L.N., Gerritsen, W.H., Huitinga, I., Melief, J., Giovannoni, G., Meier, U., Hintzen, R.Q., Verjans, G.M., van Nierop, G.P., Vos, W., Peferoen-Baert, R.M., Middeldorp, J.M., van der Valk, P., Amor, S., 2007. Epstein Barr virus is not a characteristic feature in the central nervous system in established multiple sclerosis. *Brain* 133, e137.
- Piddlesden, S.J., Lassmann, H., Zimprich, F., Morgan, B.P., et al., 1993. The demyelinating potential of antibodies to myelin oligodendrocyte glycoprotein is related to their ability to fix complement. *Am. J. Pathol.* 143, 555–564.
- Raine, C.S., Cannella, B., Hauser, S.L., Genain, C.P., 1999. Demyelination in primate autoimmune encephalomyelitis and acute multiple sclerosis lesions: a case for antigen-specific antibody mediation. *Ann. Neurol.* 46, 144–160.
- Ray, A., Mann, M.K., Basu, S., Dittel, B., 2011. A case for regulatory B cells in controlling the severity of autoimmune-mediated inflammation in experimental autoimmune encephalomyelitis and multiple sclerosis. *J. Neuroimmunol.* 230, 1–9.
- Rice, G.P., Filippi, M., Comi, G., 2000. Cladribine and progressive MS: clinical and MRI outcomes of a multicenter controlled trial. Cladribine MRI Study Group. *Neurology* 54, 1145–1155.
- Rovituso, D.M., Duffy, C.E., Schroeter, M., Kaiser, C.C., Kleinschnitz, C., Bayas, A., Elsner, R., Kuerten, S., 2015. The brain antigen-specific B cell response correlates with glatiramer acetate responsiveness in relapsing-remitting multiple sclerosis patients. *Sci. Rep.* 5, 14265.
- Ruck, T., Bittner, S., Wiendl, H., Meuth, S.G., 2015. Alemtuzumab in multiple sclerosis: mechanism of action and beyond. *Int. J. Mol. Sci.* 16, 16414–16439.
- Sasaki, Y., Casola, S., Kutok, J.L., Rajewsky, K., et al., 2004. TNF family member B cell-activating factor (BAFF) receptor-dependent and -independent roles for BAFF in B cell physiology. *J. Immunol.* 173, 2245–2252.
- Schluesener, J.H., Sobel, R.A., Linington, C., Weiner, H.L., 1987. A monoclonal antibody against a myelin oligodendrocyte glycoprotein induces relapses and demyelination in central nervous system autoimmune disease. *J. Intell. Manuf.* 139, 4016–4021.
- Serafini, B., Rosicarelli, B., Magliozzi, R., Stigliano, E., et al., 2004. Detection of ectopic B-cell follicles with germinal centers in the meninges of patients with secondary progressive multiple sclerosis. *Brain Pathol.* 14, 164–174.
- Shen, P., Roch, T., Lampropoulou, V., O'Connor, R.A., et al., 2014. IL-35-producing B cells are critical regulators of immunity during autoimmune and infectious diseases. *Nature* 507, 366–370.
- Sipe, J.C., Romine, J.S., Koziol, J.A., McMillan, R., Zyroff, J., Beutler, E., 1994. Cladribine in treatment of chronic progressive multiple sclerosis. *Lancet* 344, 9–13.
- Smith, P.A., Heijmans, N., Ouwering, B., Breij, E.C., Evans, N., van Noort, J.M., Plomp, A.C., Delarasse, C., 't Hart, B., Pham-Dinh, D., Amor, S., 2005. Native myelin oligodendrocyte glycoprotein promotes severe chronic neurological disease and demyelination in Biozzi ABH mice. *Eur. J. Immunol.* 35, 1311–1319.
- Sorensen, P.S., Lisby, S., Grove, R., Derosier, F., et al., 2014. Safety and efficacy of ofatumumab in relapsing-remitting multiple sclerosis: a phase 2 study. *Neurology* 82, 573–578.
- Sospedra, M., Martin, R., 2005. Immunology of multiple sclerosis. *Annu. Rev. Immunol.* 23, 683–747.
- Spencer, C.M., Crabtree-Hartman, E.C., Lehmann-Horn, K., Cree, B.A., Zamvil, S.S., 2015. Reduction of CD8(+) T lymphocytes in multiple sclerosis patients treated with dimethyl fumarate. *Neurol. Neuroimmunol. Neuroinflamm.* 2, e76.
- Steinman, L., Zamvil, S.S., 2016. Beginning of the end of two-stage theory purporting that inflammation then degeneration explains pathogenesis of progressive multiple sclerosis. *Curr. Opin. Neurol.*
- Storch, M.K., Piddlesden, S., Haltia, M., Livanainen, M., et al., 1998. Multiple sclerosis: in situ evidence for antibody- and complement-mediated demyelination. *Ann. Neurol.* 43, 465–471.
- Stüve, O., Warnke, C., Deason, K., Stangel, M., et al., 2014. CD19 as a molecular target in CNS autoimmunity. *Acta Neuropathol.* 128, 177–190.
- Svenningsson, A., Bergman, J., Dring, A., Vågberg, M., Birgander, R., Lindqvist, T., Gilthorpe, J., Bergenheim, T., 2015. Rapid depletion of B lymphocytes by ultra-low-dose rituximab delivered intrathecally. *Neurol. Neuroimmunol. Neuroinflamm.* 2, e79.
- Tak, P.P., Mease, P.J., Genovese, M.C., Kremer, J., Haraoui, B., Tanaka, Y., Bingham 3rd, C.O., Ashrafzadeh, A., Travers, H., Safa-Leathers, S., Kumar, S., Dummer, W., 2012. Safety and efficacy of ocrelizumab in patients with rheumatoid arthritis and an inadequate response to at least one tumor necrosis factor inhibitor: results of a forty-eight-week randomized, double-blind, placebo-controlled, parallel-group phase III trial. *Arthritis Rheumatol.* 64, 360–370.
- Topping, J., Dobson, R., Lapin, S., Maslyanskiy, A., Kropshofer, H., Leppert, D., Giovannoni, G., Evdoshenko, E., 2016. The effects of intrathecal rituximab on biomarkers in multiple sclerosis. *Mult. Scler. Relat. Disord.* 6, 49–53.
- Tuohy, O., Costelloe, L., Hill-Cawthorne, G., Bjornson, I., Harding, K., Robertson, N., May, K., Button, T., Azzopardi, L., Kousin-Ezewu, O., Fahey, M.T., Jones, J., Compston, D.A., Coles, A., 2015. Alemtuzumab treatment of multiple sclerosis: long-term safety and efficacy. *J. Neurol. Neurosurg. Psychiatry* 86, 208–215.
- van Noort, J.M., Verbeek, R., Meilof, J.F., Polman, C.H., Amor, S., 2006. Autoantibodies against alpha B-crystallin, a candidate autoantigen in multiple sclerosis, are part of a normal human immune repertoire. *Mult. Scler.* 12, 287–293.
- Weber, M.S., Prod'homme, T., Patarroyo, J., Molnarfi, N., et al., 2010. B cell activation influences T cell polarization and outcome of anti-CD20 B cell depletion in CNS autoimmunity. *Ann. Neurol.* 68, 369–383.
- Wilk, E., Witte, T., Marquardt, N., Horvath, T., et al., 2009. Depletion of functionally active CD20+ T cells by rituximab treatment. *Arthritis Rheum.* 60, 3563–3571.
- Willenborg, D.O., Prowse, S.J., 1983. Immunoglobulin-deficient rats fail to develop experimental allergic encephalomyelitis. *Neuroimmunol* 5, 99–109.
- Willis, S.N., Stathopoulos, P., Chastre, A., Compton, S.D., Hafner, D.A., O'Connor, K.C., 2015. Investigating the antigen specificity of multiple sclerosis central nervous system-derived immunoglobulins. *Front. Immunol.* 6, 600.
- Yazawa, N., Hamaguchi, Y., Poe, J.C., Teder, T.F., 2005. Immunotherapy using unconjugated CD19 monoclonal antibodies in animal models for B lymphocyte malignancies and autoimmune disease. *Proc. Natl. Acad. Sci. USA* 102, 15178–15183.
- Zhou, D., Srivastava, R., Nessler, S., Grummel, V., Sommer, N., et al., 2006. Identification of a pathogenic antibody response to native myelin oligodendrocyte glycoprotein in multiple sclerosis. *Proc. Natl. Acad. Sci. USA* 103, 19057–19062.