



Available online at www.sciencedirect.com

ScienceDirect

journal homepage: www.elsevier.com/locate/msard



CORRIGENDUM

Corrigendum to “Does Natalizumab treatment increase the risk of herpes simplex encephalitis in multiple sclerosis? Case and discussion” [Multiple Scler. Relat. Disord. 2 (4) (2013) 385-387]



Kanchan Sharma^a, Samantha A. Ballham^a, Kirsty E.A. Inglis^a,
Shelley Renowden^b, David A. Cottrell^{a,*}

^aDepartment of Neurology, Frenchay Hospital, University of Bristol, North Bristol NHS Trust, Bristol BS16 1LE, UK

^bDepartment of Neuroradiology, Frenchay Hospital, University of Bristol, North Bristol NHS Trust, Bristol BS16 1LE, UK

The authors wish to include the following [Fig. 1](#) and legend which were inadvertently omitted from the original manuscript despite being mentioned in the text of paragraph 1.3 (page 386).

The authors would like to apologise for any inconvenience caused.

DOI of original article: <http://dx.doi.org/10.1016/j.msard.2013.02.006>

*Corresponding author. Tel.: +44 1179701212.

E-mail address: david.cottrell@nbt.nhs.uk (D.A. Cottrell).

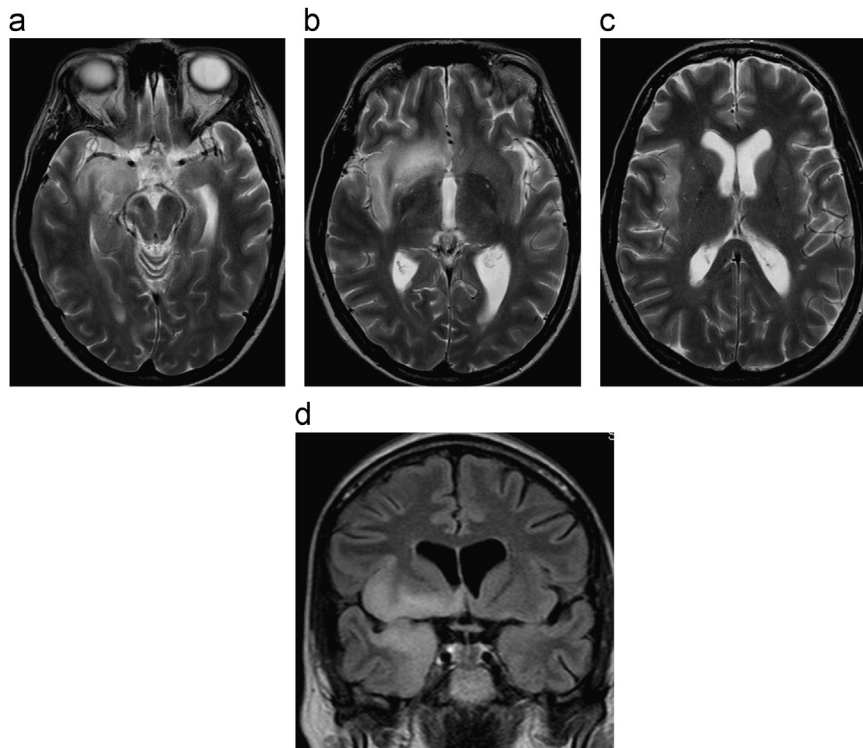


Fig. 1 T2W axial (a-c) images and a FLAIR coronal (d) MR image demonstrate high T2 signal in the medial aspect of the right temporal lobe, insular cortex and anterior perforated substance highly suggestive of herpes encephalitis.